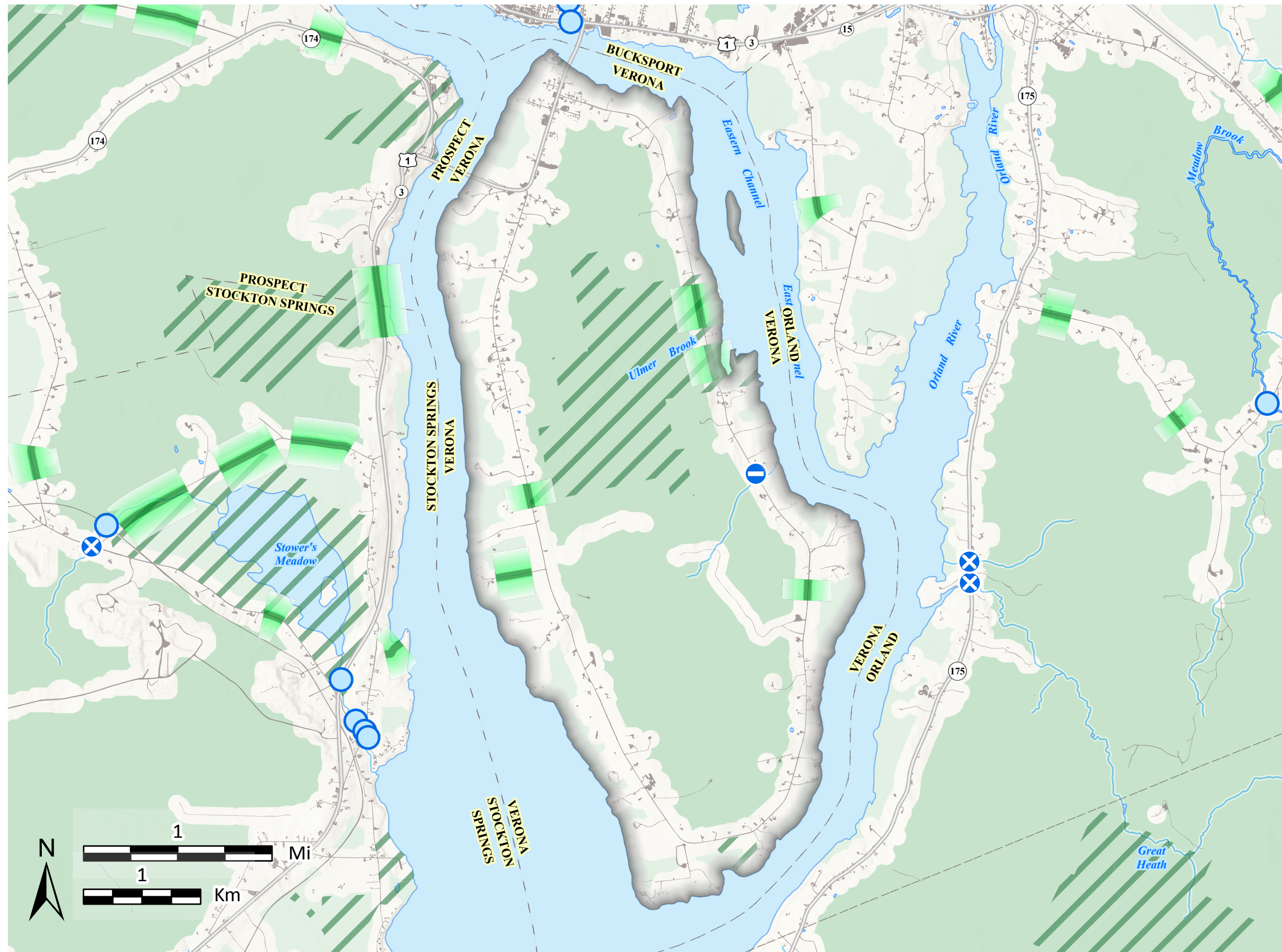


# Verona Island

## Habitat Connectivity



**Beginning with Habitat (BwH)** equips Maine communities, landowners, and conservation partners with tools to protect, restore, and connect important habitats and ecosystems in a changing climate. [www.beginningwithhabitat.org](http://www.beginningwithhabitat.org)

- Organized Towns**
- Area of Interest**
- Impervious Surface**
- Habitat Blocks**  
Comprehensive Plan Review Criteria Rule (DACF Chapter 208) requires blocks >500 acres be considered important natural resources for town comprehensive planning.
  - 0-500 Acres**
  - 500 + Acres**
- Development Buffer**
- Habitat Connectors**  
 **Likely Road Crossing Areas for Wildlife**
- Conserved Lands**  
 **Fee and Easement Conservation Land**

TOWNSHIP BOUNDARIES - ME Office of GIS (2021)  
 IMPERVIOUS CCAP NOAA - impervious land cover (2022)  
 HYDROLOGY - US Geological Survey (2016)  
 UNDEVELOPED HABITAT BLOCKS & CONNECTORS - ME Dep of Inland Fisheries and Wildlife (2020)  
 ROAD STREAM CROSSINGS - ME Dep. of Inland Fisheries and Wildlife (2022)

CONSERVATION LANDS - ME Dept of Ag., Cons., and For., Land Use Planning Comm'n, ME Dep. of Inland Fisheries and Wildlife (2024)

*This map is nonregulatory and is intended for planning purposes only*

April 2025